

# Wellens Syndrome

## Definition

Pre-infarction stage of coronary artery disease suggesting 80-90% LAD occlusion that often progresses to a devastating anterior wall MI.

## History/Physical Exam

Following an ischemic event suggestive of unstable angina. ECG findings are generally only visible once patient is pain free.

## Key 12-Lead Features

TYPE A: Biphasic T waves, most commonly in leads V2 and V3. Presents with upstroke/down-stroke.

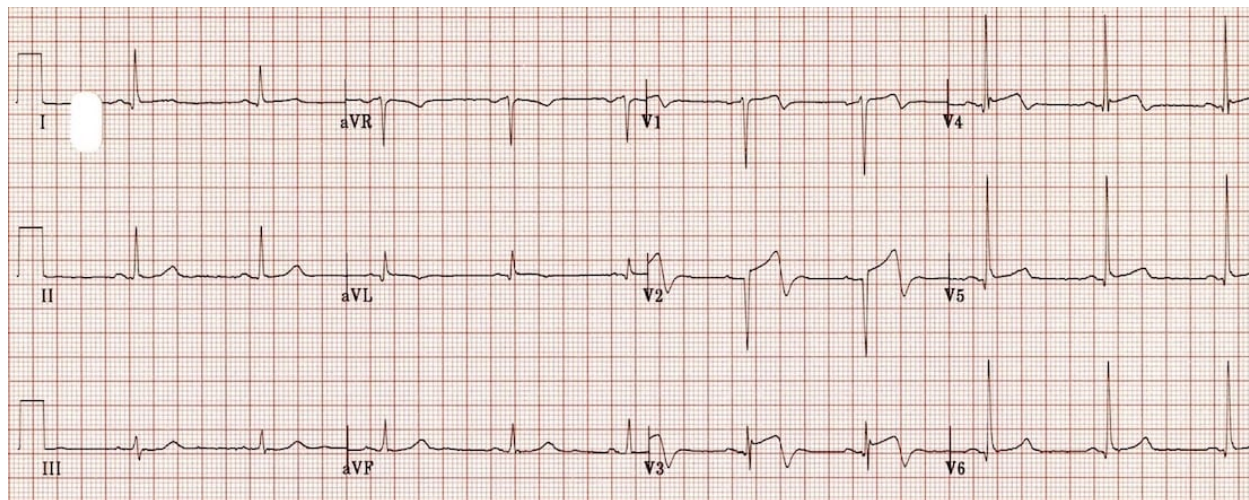
TYPE B: 76% of the time, deep inversion of the T-wave segment in the precordial leads, V1-V4.

## Key Treatment Points

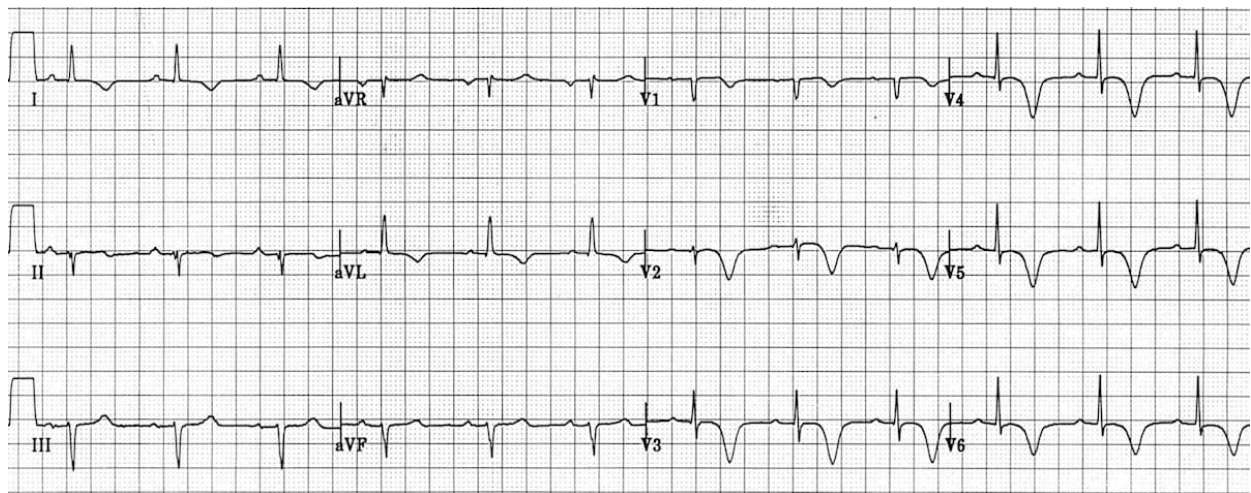
- Patient advocacy for a cardiology consult
- Monitor for potential emerging STEMI

## 12 Lead ECG Samples

### TYPE A



### TYPE B



[Further Reading](#)

#### References

1. Rhinehardt J, et al. Electrocardiographic manifestations of Wellens' syndrome. 2002. [\[Link\]](#)

