

Left Bundle Branch Block

Definition:

Conduction abnormality of the left ventricle, causing wide QRS complexes and ST changes mimicking STEMI.

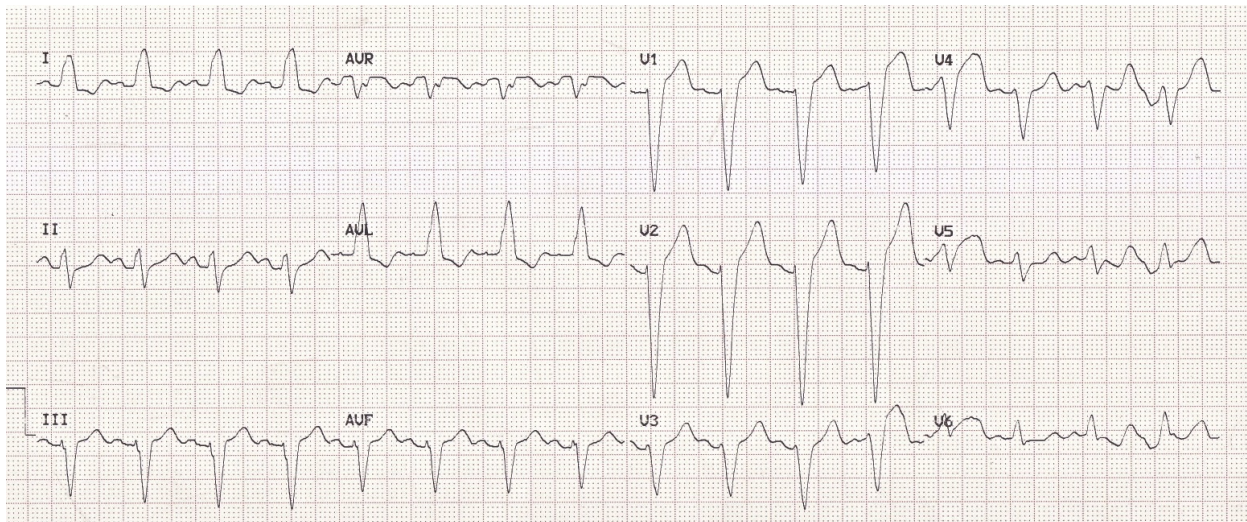
History/Physical Exam:

History of CAD, hypertension, previous MI.

Key 12-Lead Features:

- QRS > 120ms
- Prominent S (V1-3) / prominent R (V5/6, I/aVL)
- ST Elevation common in V1-4
- See [Sgarbossa Criteria](#) for Diagnosing MI in the presence of LBBB

12 Lead Sample



References

1. Da Costa D, et al. Bradycardias and atrioventricular conduction block. 2002. [\[Link\]](#)

