

# Wellens Syndrome

## Definition

Pre-infarction stage of coronary artery disease suggesting 80-90% LAD occlusion that often progresses to a devastating anterior wall MI.

## History/Physical Exam

Following an ischemic event suggestive of unstable angina. ECG findings are generally only visible once patient is pain free.

## Key 12-Lead Features

TYPE A: Biphasic T waves, most commonly in leads V2 and V3. Presents with upstroke/down-stroke. Approximately 25% of the time.

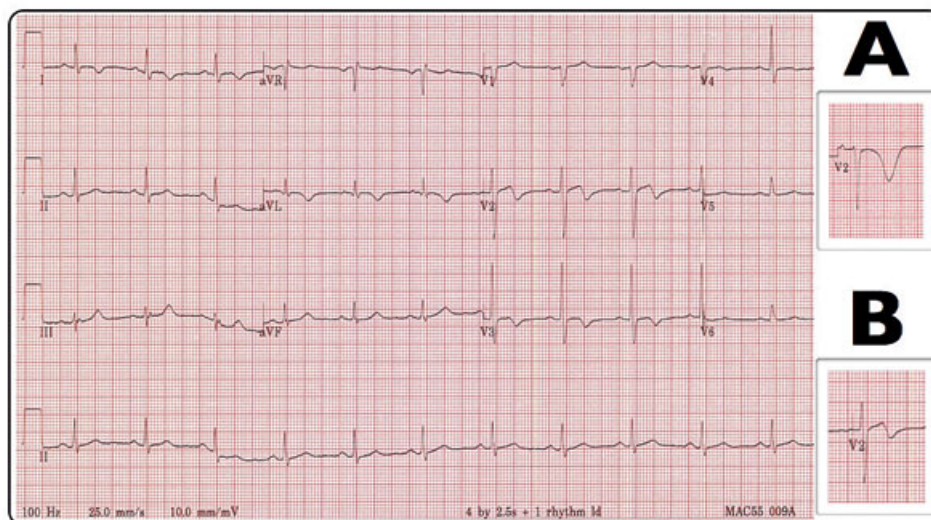
TYPE B: Deep inversion of the T-wave segment in the precordial leads, V1-V4. Approximately 75% of the time.

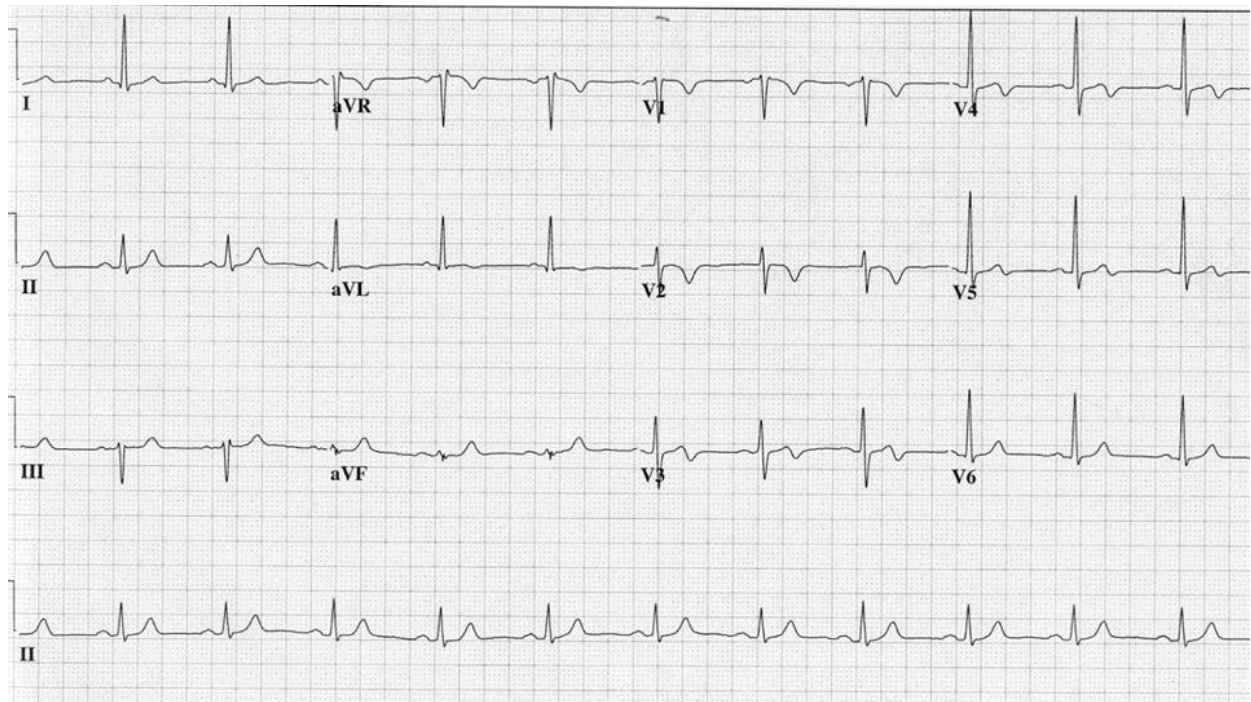
## Key Treatment Points

Patient advocacy for a cardiology consult

Monitor for potential emerging STEMI

## 12 Lead ECG Samples





[Further Reading](#)

## References

Rhinehardt J, Brady WJ, Perron AD, Mattu A. Electrocardiographic manifestations of Wellens' syndrome. *Am J Emerg Med.* 2002 Nov;20(7):638-43. PubMed PMID: 12442245.

