

# BC Acute Stroke Care Tiers of Service Model

Colour Legend:

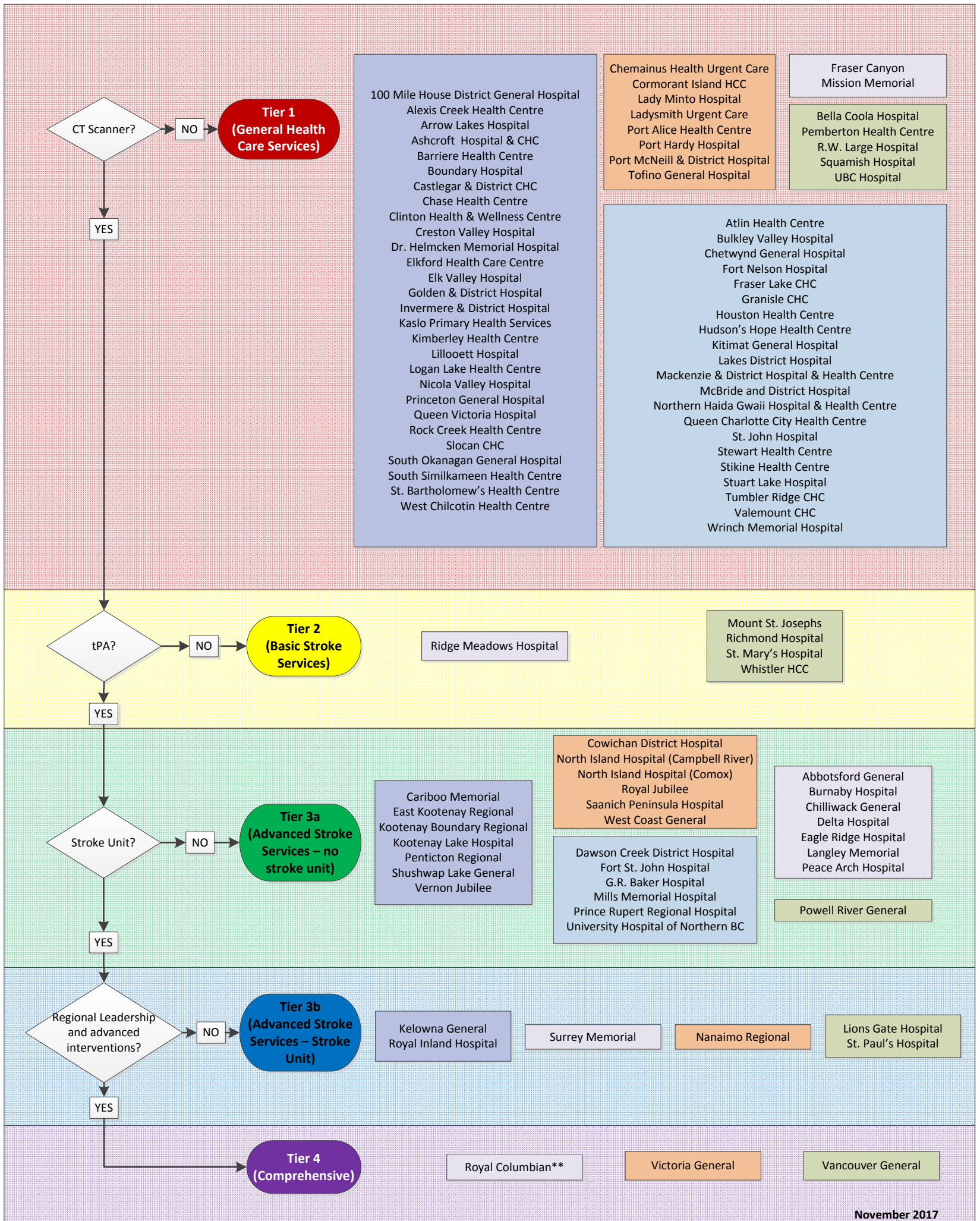
Interior Health Sites

Northern Health Sites

Fraser Health Sites

Vancouver Island Sites

Vancouver Coastal/  
Providence Health Sites



November 2017

\*\*RCH does not strictly meet the definitions set forth in these tiers. Royal Columbian provides tPA and endovascular therapy but does not have a stroke unit that meets the provincial definition. Fraser Health is aware of and working to address these challenges in care.